



NATIONALRad

SPECIALISTS IN DIAGNOSTIC IMAGING

MRI CASE STUDY LEFT ELBOW

This case study is based on an actual diagnostic interpretation generated by a NationalRad board certified musculoskeletal radiologist.

CLINICAL INFORMATION:

Evaluate elbow pain. Assess for biceps rupture.

COMPARISON:

None.

CONTRAST:

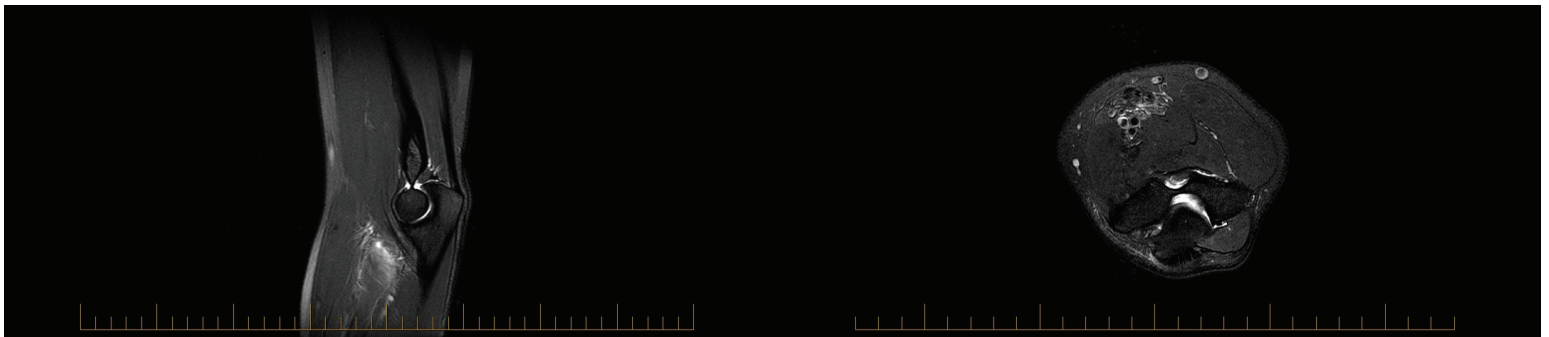
None.

TECHNIQUE:

Axial STIR, axial T2, coronal gradient-echo, coronal STIR, coronal dual-echo, sagittal T1, axial T1.

IMPRESSION:

1. Small elbow effusion.
2. Rupture of the distal biceps tendon with approximately 8 cm of retraction. There is thickening of the tendon edges reflective of underlying tendinosis. There is peritendinous edema and fluid coursing along the tract of the tendon rupture. The pattern of alterations however appears subacute.
3. Mild common extensor tendinosis.



NATIONALRAD

HEADQUARTERED, DEERFIELD BEACH, FLORIDA | SUBSPECIALTY RADIOLOGY SERVICES, NATIONWIDE
877.734.6674 | WWW.NATIONALRAD.COM | INFO@NATIONALRAD.COM