



NATIONALRad

SPECIALISTS IN DIAGNOSTIC IMAGING

MRI CASE STUDY RIGHT KNEE

This case study is based on an actual diagnostic interpretation generated by a NationalRad board certified musculoskeletal radiologist.

CLINICAL INFORMATION:

Right knee pain and swelling with limited range of motion. Sprained in dance class. No surgery.

COMPARISON:

Plain radiographs dated one day prior.

CONTRAST:

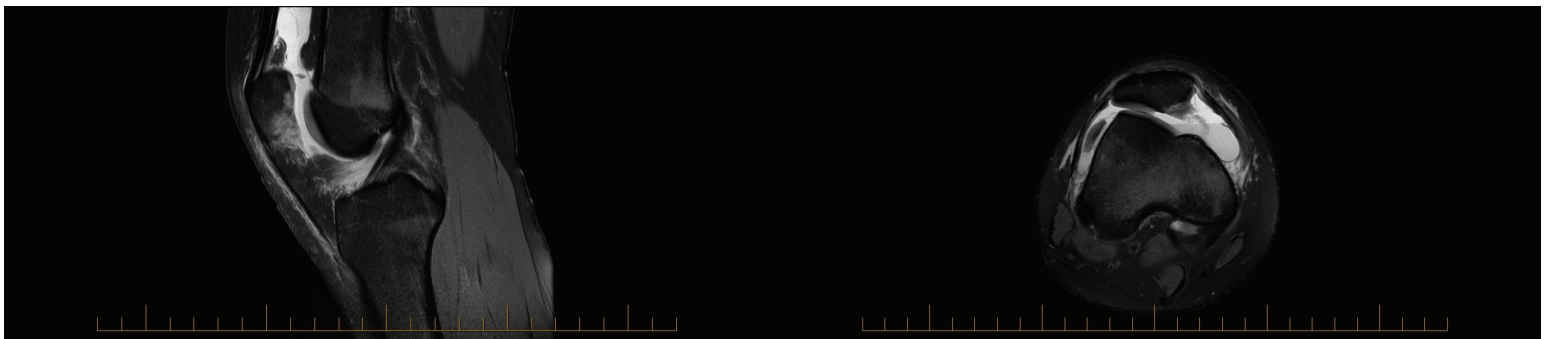
None.

TECHNIQUE:

Axial PD fat sat, coronal T1 and STIR, sagittal PD, T2 and PD fat sat images were performed of the right knee.

IMPRESSION:

1. Large hemarthrosis containing three large osteochondral loose bodies on the lateral side as seen on plain radiographs from one day prior.
2. Large osteochondral defect at the patellar apex with osteochondral injury on the medial patellar facet and bone contusion on the lateral femoral condyle consistent with a recent patellar dislocation.
3. Partial tears of the medial retinaculum and the medial patellofemoral ligament.



NATIONALRAD

HEADQUARTERED, DEERFIELD BEACH, FLORIDA | SUBSPECIALTY RADIOLOGY SERVICES, NATIONWIDE
877.734.6674 | www.NATIONALRAD.COM | INFO@NATIONALRAD.COM