



NATIONALRad

SPECIALISTS IN DIAGNOSTIC IMAGING

MRI CASE STUDY TEMPOROMANDIBULAR JOINT (TMJ)

This case study is based on an actual diagnostic interpretation generated by a NationalRad board certified neuro (CAQ) radiologist.

CLINICAL INFORMATION:

Right-sided pain.

COMPARISON:

None available.

CONTRAST:

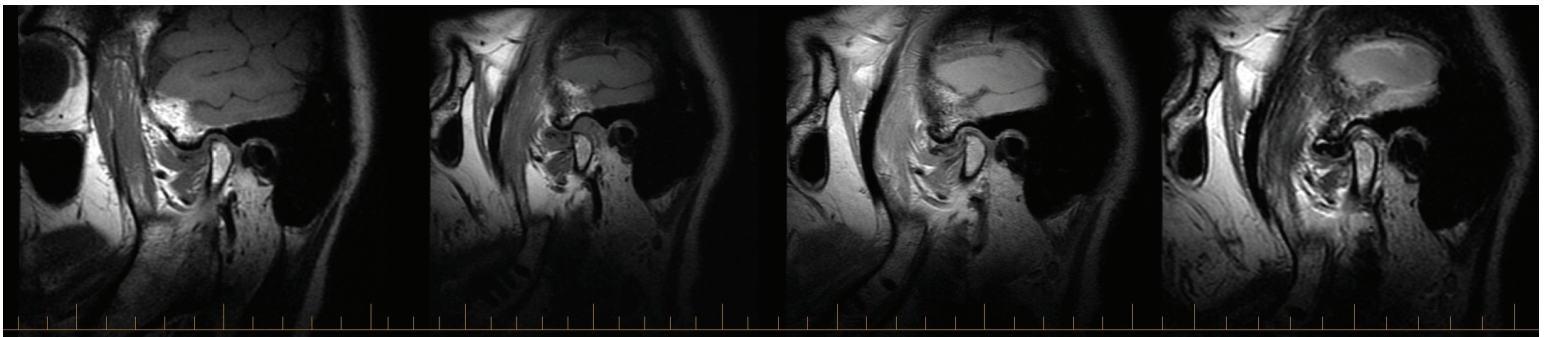
None given.

TECHNIQUE:

T1, PD and T2 sagittal oblique images were done in closed and open mouth positions at both temporomandibular joints, as were echo cine images.

IMPRESSION:

1. At the right temporomandibular joint, there is anterior displacement or dislocation of the articular disc on both open and closed mouth images. There is also edema and likely tearing of the articular disc.



NATIONALRAD

HEADQUARTERED, DEERFIELD BEACH, FLORIDA | SUBSPECIALTY RADIOLOGY SERVICES, NATIONWIDE
877.734.6674 | www.NATIONALRAD.COM | INFO@NATIONALRAD.COM